

Not Just a Sander, But a **SANDING SYSTEM!**



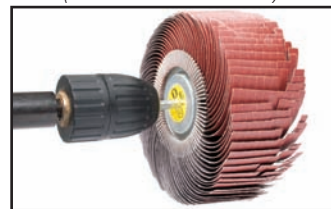
Flex-Wand (Pictured with 4" premade Finishing Mop)



24" Aluminum Fence
(Now in Anodized Gold)



1/2" Keyless Chuck



2" x 7" Mac Mop, Premade
(Pictured on 1/2" Keyless Chuck)



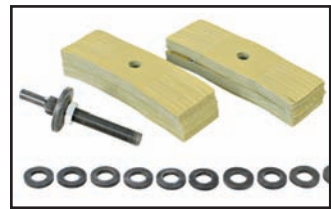
Finishing Drum Kit
(Medium and Coarse Grit)



1" & 1.5" Mini-Mop
Kits & Refills



Pictured: Assembled 6"
Double Finishing Mop



DbL. Finishing Mop Kits
1" x 4" & 2" x 6"



Finishing Mop Refills;
1" x 4" & 2" x 6"



Abrasive Rolls
3" x 5, 10 or 25 meters



Starter Kit; 3" x 5 meter rolls, 9 Grits
Hobby Kit; 3" x 5 meter rolls, 6 Grits

The SAND-FLEE® has been designed to address most of the sanding needs within your shop. With a complete line of supplies and accessories the SAND-FLEE® is capable of creating a fine finish on a broad range of woodworking projects.

The SAND-FLEE®, with its extended shaft can now be used to sand the most intricate crevices of intarsia. Then switch the accessory and buff and polish. It is truly a one-station sanding system.

Optional 1/2" Keyless Chucks accept a variety of sanding drums as well as a selection of sanding mops including a versatile collection of Mini-Mops. All come in a variety of grits.

Abrasives for the SAND-FLEE® are available in 3" x 5, 10 or 25 meter rolls. Grits available are 60, 80, 100, 120, 150, 180, 220, 320 & 400.

The Finishing Sanding Mops are a particularly useful item in a variety of non-flat profile applications such as architectural moldings, carvings, shutters and even for automotive parts. Finishing Mops come in grits of 60, 80, 100, 120, 150, 180, 220, 320 and 400.

Woodcarvers, hobbyists and metalworkers find the Mini Mops extremely useful in the sanding and polishing of fine detail. They'll clean up intarsia parts without the risk of losing the profile. Refills come packed separately in 120, 220 or 320 grit.

And the 24" extruded aluminum fence is an essential feature, allowing controlled sanding of vertical panels and other hard-to-control work pieces.

You can find all of these fine products and more at www.rjrstudios.com

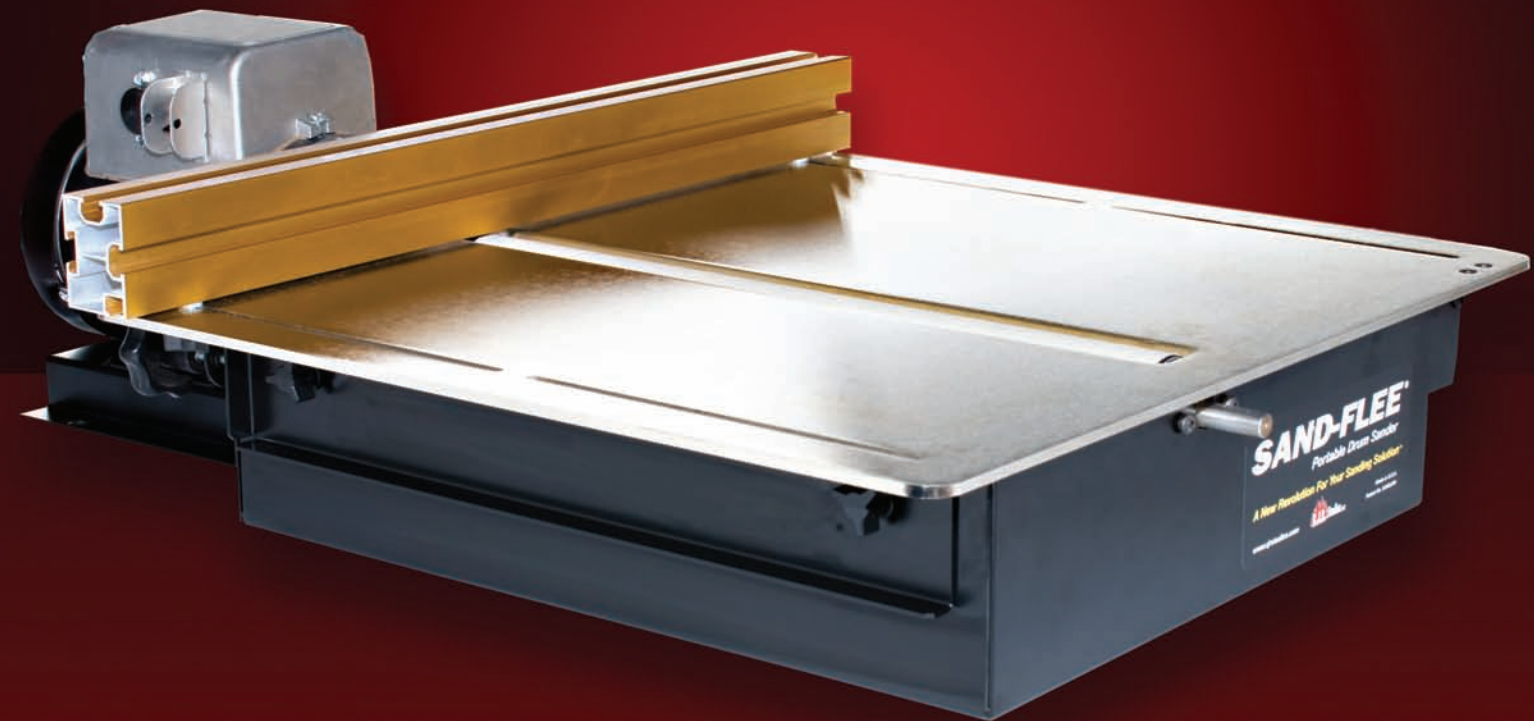


3B Kerry Court Southampton, NJ 08088
Phone: 609-801-1800 Fax: 609-801-1801

UPDATED! For Better Performance! Better Value!

SAND-FLEE®

Portable Drum Sander System



A New Revolution For Your Sanding Solution®



- Anodized Gold Fence Included
- Improved 1/4" Nickel-Plate Steel Top
- More Precise Height Adjustment
- Even Better Dust Collection
- Heavier Cabinetry and Mounts

ALSO! Super Compact Model SF-0900 Fits Anywhere!

Take a Turn for the Best! The **SAND-FLEE®** is the New Benchmark for Bench Top Finishing Tools.

Sanding and Finishing are essential components of any successful woodworking project. With the new SAND-FLEE® Portable Drum Sander you can improve the finish of your woodworking projects and reduce the need for tedious hand sanding. The SAND-FLEE® produces a fine, glass-smooth finish without sniping or burning.

An 18" wide precision CNC-milled aluminum/steel drum is wrapped with Velcro®. With the convenience of Velcro®, changing sandpaper is user friendly. The flexibility of the Velcro® also allows use for up to three different grits of paper across the drum at the same time so that smaller projects can achieve a fine finish without changing set-up.

The SAND-FLEE® can be used for sanding wood, composite materials and even metal. The sander is designed for finished surface sanding for all types of projects such as raised panel doors, glue-ups, crafts, the most delicate fretwork, marquetry, puzzles, toys and more.

The SAND-FLEE® can accommodate a sanding width from the smallest of pieces up to 36" with no height limitations. Attachments available for the SAND-FLEE® also extend the

woodworker's options to address all of their profile sanding needs.

The versatility of the SAND-FLEE® even extends to its use as a finishing jointer as attested to in the pages of *WOOD Magazine*.

Quality equipment creates quality products. From the reliable 1/3hp Baldor motor to the precision sanding drum, you'll find attention in this American made machine that translates into a tangible improvement in your woodworking projects. Today the SAND-FLEE® can be found in many professional shops and job sites, utilized in a myriad of different applications.



Using the easy to follow directions you can load the Velcro® covered drum with a loop backed sanding roll in minutes. The 18" roller length easily accommodates three grits for quick progressive sanding.

Rugged Direct-drive 1/3 HP Baldor motor produces a reliable 1725 rpm

Anodized aluminum fence with T-track allows for featherboards, hold-downs and other attachments.

New perfectly balanced aluminum/steel drum is CNC-machined to assure a uniform surface across its entire 18" length.



New Micro-adjustment Knob

New 14 gauge reinforced steel cabinet provides a rugged base for some of the most rigorous sanding and finishing tasks in your shop.

The SAND-FLEE® with its new downdraft design, used in conjunction with your shop dust removal system, will make this the cleanest sander you will ever own.

The new super-rigid 1/4" steel nickel-plated top allows for heavier projects such as cabinetry work and accepts magnetic featherboards.

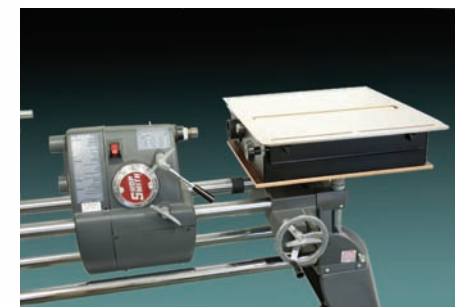
Mini-Model SF-0900: The SAND-FLEE® that fills big shoes in your shop without a big footprint.

The SAND-FLEE® Portable Drum Sander is a proven bench top power tool designed to save you hours of tedious hand sanding while improving the finish of your woodworking projects.

The SF-0900, the newest model which is designed for the smaller shop, delivers all the unique features for a SAND-FLEE® performance! Its 9" wide precision machined aluminum drum is covered with a Velcro® making it a snap to change paper just like the original SAND-FLEE®.

The SF-0900 features a powder-coated, reinforced steel base, an 1/8" nickel-plated steel top, a 2-1/2" dust port and an accurate CNC-machined aluminum drum for virtually no vibration. The compact and light 1700 RPM Bodine motor runs cool and quiet!

Made in the U.S.A.



Now available as an accessory for your Shop Smith. Model SF-MRKV

Made in the U.S.A.

A MESSAGE FOR OUR CUSTOMERS

R.J.R. Studios, LLC is headquartered in Southamptton, New Jersey. Our commitment is to challenge the standards accepted by others and to provide innovative and quality products for the woodworker and hobbyist. As the inventors and manufacturers of the SAND-FLEE® Portable Drum Sander, we have launched our product line with rave reviews and a great deal of success.

The SAND-FLEE® is the ultimate surface-finishing sander, which provides you "A New Revolution for your Sanding Solution."

A "Customer comes first" approach to business has generated worldwide brand awareness and a growing community of friends. The SAND-FLEE® is made in the USA, with owners in all 50 states as well as 5 continents. The road to success is filled with potholes and tollbooths, but with God's grace, we have been able to stay the course. American Made is more than a statement of fact; it represents our history and commitment to the next generation. At the end of the day, if we are not making a difference in the lives of our customers, we are falling short of our ultimate goal.

We hope you have as much fun using your SAND-FLEE® as we have had developing it and bringing it to market.

Safe Woodworking,
Stephen C. Raffo
President, R.J.R. Studios, LLC

SAND-FLEE® SPECIFICATIONS

SF-1800

Direct Drive Baldor Motor: 1/3 HP, 48 Fr, 1725 rpm, Capacitor with Auto Shut-off
Eight foot cord
Base: 14 gauge reinforced, powder-coated steel cabinet, totally enclosed; 16-7/8" deep x 19-1/2" wide x 5" high
Motor Base: 8"W x 11-1/4"D x 1"H
Top: 1/4" Nickel-plated steel 23.5" x 23.5"
Drum: 2" X 18" CNC milled & turned aluminum/steel wrapped with Velcro® with two sealed ball bearings & CNC-machined pillow blocks
Dust Port: 2-1/2" Diameter with new Downdraft System
Sanding Width: Sand up to 36" wide
Sanding Capacity: Sand with up to 3 Grits Simultaneously
Weight: 78 lb.

SF-0900

Belt Drive Bodine Motor: 1/9 HP, 1700 rpm, Capacitor
Safety switch front mounted
Motor: enclosed within the cabinet
Removable eight ft. power cord attached with international EIC,C-14 adaptor plug for easy storage and transportation
Base: 14 gauge powder-coated steel cabinet; 10" x 14"
Top: 1/8" x 12" x 17" Nickel-plated steel
Drum: 2" X 9" CNC-milled & turned aluminum/steel wrapped with Velcro® with two sealed ball bearings & CNC-machined pillow blocks
Dust Port: 2-1/2" Diameter with new Downdraft System
Sanding Width: Sand up to 18" wide
Sanding Capacity: Sand with up to 3 Grits Simultaneously
Weight: 37 lb.